



Origin of Galactic Cosmic Rays

J. Marvin Herndon, Ph.D

Transdyne Corporation

Deweese Island, SC USA

ABSTRACT

Galaxies are prominent features as deep into the universe as astronomers can observe. Among the vast number of galaxies, there are only a few prominent morphologies, suggesting a commonality of formative conditions. Galaxies and the origin of elements heavier than hydrogen and helium are inexplicable within the current foundations of astrophysics which are based upon stellar ignition by gravitational collapse, galaxy formation from luminous stars, and abrogation of scientific standards. I have presented evidence for a fundamentally different understanding that began with the realization that thermonuclear reactions in stars, as in hydrogen bombs/devices, are ignited by nuclear fission chain reactions, and ultimately that dark stars in dark galaxies are ignited by nuclear matter jetted out from the galactic center. The luminous stars of galaxies are evidence of the paths of galactic jets that contacted and seeded dark stars with fissionable elements that ignited their thermonuclear fusion reactions. The nuclear matter of the galactic jets, I posited, is the principal origin and source of elements heavier than hydrogen and helium. The spherical assemblage of un-ignited dark stars maintains the dynamical stability of the pattern of luminous stars as required by the velocity dispersions and rotation curves evidenced by Vera C. Rubin. Observation of actinide elements in galactic cosmic rays connects their origin to galactic jets, whose nuclear matter forms actinide elements that sustain nuclear fission chain reactions which ignite thermonuclear fusion reactions thereby making galactic dark stars luminous. Presumably, the nuclear matter jetted from galactic centers is sufficiently energetic to account for the energy distributions observed in galactic cosmic rays. Cosmic rays can now be considered as samples from galactic jets. Theoretical Investigations (not models) of nuclear matter condensation of elements from jetted galactic nuclear matter can be validated by comparison with solar/meteoritic abundance patterns, especially the odd atomic mass nuclides.

INTRODUCTION

From balloon experiments in 1912, Hess demonstrated that highly penetrating ionizing radiation increased with altitude, thus originating from space [1]. In 1948, Freier et al. [2, 3] discovered evidence for nuclei as heavy as iron in cosmic rays. From photographic emulsions in balloon flights, Fowler et al. [4] in 1967 identified heavy nuclei in cosmic rays, including two having an atomic number of 90 ± 4 . Using “an array of barium-phosphate glass track-etch detectors” deployed on the *Mir*, the Russian space station, Westphal et al. [5] measured elemental abundances with $Z > 70$ in galactic cosmic rays. Actinide element relative abundances in cosmic rays, including ^{92}U , ^{90}Th and possibly ^{96}Cm were reported in 2012 [6]. Observation of actinide elements in cosmic rays is key to understanding their origin.

Numerous attempts have been made as efforts to explain the origin of cosmic rays. Early explanations included suggestion that cosmic rays originated from a solar-like source with preferential acceleration of easily-ionized elements [7, 8]. Another early suggestion was that galactic cosmic ray nuclei originate in old interstellar gas and dust [9]. Yet another is that they originate in freshly-synthesized material enhanced in r-process nuclei [10]. For a good review of recent thinking on the subject, see [11].

For at least the past three decades astrophysicists have systematically failed to practice long-standing principles of sound scientific practice. That failure has crippled their efforts to understand important matters of astrophysical concern, including the origin of galactic cosmic rays [12].

When a new, contradictory idea arises, there should be discussion and debate. If possible, efforts should be made to refute the new idea, to show that it is *not* true. If the scientific community is unable to refute the idea, ideally in the same scientific journal where it was first published, then the idea should be acknowledged and cited in relevant scientific literature. That way the new idea will be exposed to other scientists who might be able to make further advances. That is the way real science works, but not so in the nearly worldwide astrophysics community.

For at least the last three decades, when a new, contradictory idea arises, members of the astrophysics community attempt to thwart its publication with false and demeaning reviews, and, if published, the contradiction is systematically ignored, not cited when appropriate, for example [13]. Moreover, in my case, I was blacklisted by arXiv.org. Such behavior cripples astrophysics progress, and cheats those who fund investigations, mainly taxpayers and foundations.

BACKGROUND

The sun is an ordinary star in an ordinary galaxy so one might expect a commonality of processes involved in the origin of the elements universe-wide, the origin of galactic luminous stars, and the origin of galactic cosmic rays.

In a 1957 scientific article, entitled “*Synthesis of the Elements in Stars*,” Burbidge, Burbidge, Fowler, and Hoyle [14] proposed that chemical elements are synthesized in stars by a number of processes. Heavy elements, however, were assumed to be solely produced by “rapid neutron capture” during supernova explosions. These ideas are still widely believed [15]. Subsequent observations [13], I posited, led to a fundamentally different understanding of the origin of the elements and the thermonuclear ignition of dark galaxies [12, 16, 17] (Figure 1), which I describe briefly here.

Celestial Science: Highest Tier of Knowledge Related to Planets, Stars, Galaxies, Dark Matter and More



J. Marvin Herndon, Ph.D.

Figure 1. [12].

At the beginning of the 20th century, understanding the nature of the energy source that powers the sun and other stars was one of the most important unsolved problems in the physical sciences. Initially, it was thought that during formation, when dust and gas coalesce and collapse by gravitational attraction, great amounts of heat would be produced. But calculations showed that the energy release would be insufficient to power the sun for as long as life has existed on Earth. Following the discovery of radioactivity by Becquerel in 1896 [18], numerous experiments began to reveal the nature of radioactivity, the atomic nucleus, and nuclear reactions [19].

In 1934, Oliphant, Harteck, and Rutherford [20] discovered thermonuclear fusion reactions. Thermonuclear fusion reactions are called thermonuclear because temperatures of more than 1,000,000°C are required for the nuclei to achieve the very high velocities needed to overcome

the electric charge repulsion and get close enough for the nuclei to react. When the fusion reaction takes place, a great quantity of energy is released.

Thermonuclear fusion reactions seemed to be the unknown source of energy that powers the sun and other stars, which contain copious amounts of hydrogen and helium. The scientific development of solar thermonuclear reactions was undertaken by nuclear physicists such as Edward Teller [21] and Hans Bethe [22], whose names would later be associated with the development of nuclear weapons.

By 1938, theoretical investigations on the thermonuclear reactions thought to power the sun and other stars had sufficiently progressed that there seemed to be no longer any question as to the sun's energy source. In 1938, there was no energy source known that could produce the million degree temperatures necessary to ignite thermonuclear fusion reactions. So, it was just assumed that such temperatures would be produced during star formation when dust and gas coalesce and collapse by gravitational attraction.

In 1965, Hayashi and Nakano [23] first showed that gravitational collapse of dust and gas during star formation would not yield the requisite million degree temperatures for igniting thermonuclear fusion reactions. The reason is obvious. Heating a forming star by gravitational collapse of dust and gas is offset by heat radiated from its surface, which is a function of the fourth power of temperature. In other words, T^4 represents a huge loss factor when $T \geq 1,000,000^\circ\text{C}$. But instead of asking "What is wrong with this picture?", astrophysicists just made *ad hoc* assumptions, such as a shock-wave induced flare up, or they tweaked model-parameters in attempts to attain the requisite temperatures [24, 25].

The sun is like a hydrogen bomb held together by gravity. Both are powered by thermonuclear fusion reactions, and both require temperatures on the order of a million degrees Celsius for ignition. Yet a thorough search of the scientific literature revealed that no one before me had thought of the idea that thermonuclear fusion reactions in stars [21, 22, 26-28] are ignited by nuclear fission chain reactions, which I published in 1994 in the *Proceedings of the Royal Society of London* [13].

Splitting the uranium nucleus releases an enormous amount of energy and liberates neutrons. These newly released neutrons could split other uranium nuclei, which could split others, and so forth in a chain reaction that is the basis for the atomic (nuclear fission) bomb [29, 30]. In every thermonuclear hydrogen bomb (or device) detonation, the requisite temperatures are obtained through use of an associated nuclear fission chain reaction trigger.

The nature of dark matter represents an outstanding problem in astrophysics. In the old, flawed paradigm, stars (except tiny brown dwarfs) are always thought to ignite by gravitational collapse during formation. In my new paradigm [13], however, stellar ignition requires the presence of very heavy elements, such as uranium or plutonium, to undergo nuclear fission chain reactions. As I noted in 1994, the corollary to thermonuclear ignition is non-ignition, which might result from the absence of fissionable elements, and which would lead to dark stars [13]. A dark star the mass of the sun after cooling would have a diameter similar to that of Earth [31].

The idea that stars are ignited by nuclear fission chain reactions opens the possibility of stellar non-ignition, a concept which has fundamental implications bearing on the nature of dark matter and, as I suggested [12, 16] and discuss below, on the thermonuclear ignition of dark galaxies, on the distribution of luminous stars in galaxies universe-wide, on the principal origin of elements heavier than hydrogen and helium, and as presented here on the origin of galactic cosmic rays.

Vera C. Rubin's observational evidence [32], primarily based on velocity dispersions and rotation curves, suggests that spiral galaxies have associated with them massive, spheroidal, dark matter components, thought to reside in their galactic halos (Figure 2).

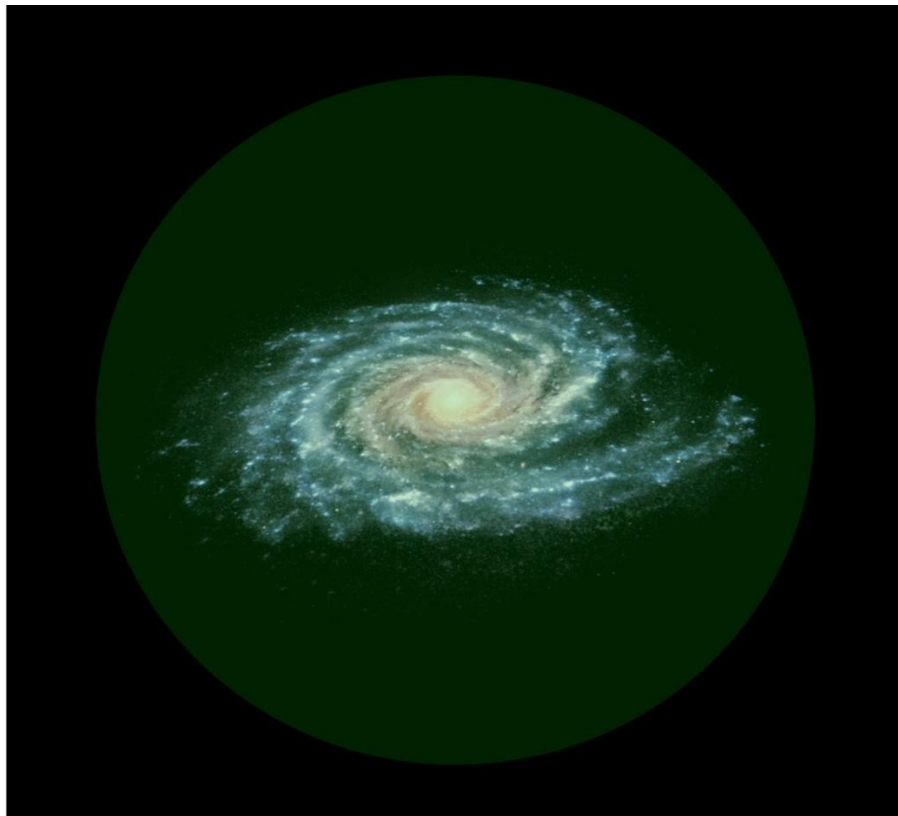


Figure 2: Typical spiral galaxy. The hypothetical green halo shows the region where dark matter is thought to reside, imparting dynamic stability to the luminous configuration of stars [32].

Interestingly, the luminous disc stars of spiral galaxies belong to the heavy-element-rich Population I; the luminous spheroidal stars of spiral galaxies belong to the heavy-element-poor Population II. In spiral galaxies, the dark matter components are thought to be associated in some manner with the spheroidal heavy-element-poor Population II stars [33, 34]. The association of dark matter with heavy-element-poor Population II stars is inferred to exist elsewhere, for example, surrounding elliptical galaxies [35, 36]. Because of the apparent association of dark matter with heavy-metal-poor Population II stars, I suggested the possibility that these dark matter components are composed of what might be called Population III stars, zero metallicity stars or stars at least devoid of fissionable elements, and, consequently, unable

to sustain the nuclear fission chain reactions necessary for the ignition of thermonuclear fusion reactions [13].

Figure 3 is a Vera C. Rubin Observatory image showing numerous galaxies. Two features stand out and beg for explanation. First, among this vast number of galaxies, there are only a few prominent morphologies, suggesting a commonality of formative conditions. Second, a vast proportion of the observable luminous galaxies are flat, not spherical.



Figure 3: Vera C. Rubin Observatory image showing a small section of the Virgo galaxy cluster. Visible are two prominent spiral galaxies (lower right), three merging galaxies (upper right), several groups of distant galaxies, many stars in the Milky Way galaxy, and more.

Although dark matter is thought to be more than an order of magnitude more abundant than luminous matter in the universe, there has yet to be an unambiguous identification of a wholly dark, galactic-scale structure. There is, however, increasing evidence that VIRGOHI 21, a mysterious hydrogen cloud in the Virgo Cluster, discovered by Davies et al. [37] may be a dark galaxy. Minchin et al. [38] suggested that possibility on the basis of its broad line width unaccompanied by any responsible visible massive object. Subsequently, Minchin et al. [39] find an indubitable interaction with NGC 4254 which they take as additional evidence of the massive nature of VIRGOHI 21. If indeed VIRGOHI 21 turns out to be composed of dark stars having approximately the mass of stars found in luminous galaxies, it would lend strong additional support to my concept of stellar thermonuclear ignition by nuclear fission [13].

The existence of a dark galaxy composed of non-brown-dwarf, solar-massive dark stars would certainly call into question the long-standing idea of gravitational collapse as the sole source of heat for inevitable stellar thermonuclear ignition, which after all has no laboratory support, unlike my idea of a nuclear fission trigger [13], which has been demonstrated experimentally with each hydrogen bomb/device detonation.

DIRECTIONALLY BIASED ORIENTATION OF GALACTIC JETS

The conditions and circumstances at galactic centers appear to harbor the necessary pressures for producing highly dense nuclear matter and the means to jet that nuclear matter out into the

galaxy where, as suggested here, the jet seeds dark stars which it encounters with fissionable elements, turning dark stars into luminous stars. Galactic jets, either single or bi-directional, are observed originating from galactic centers, although little is currently known of their nature.

Figure 4 is a Hubble Space Telescope image of three galactic jets, one 4,000 light-years long, one 10,000 light-years long, and one which was observed to have a length of 865,000 light-years.

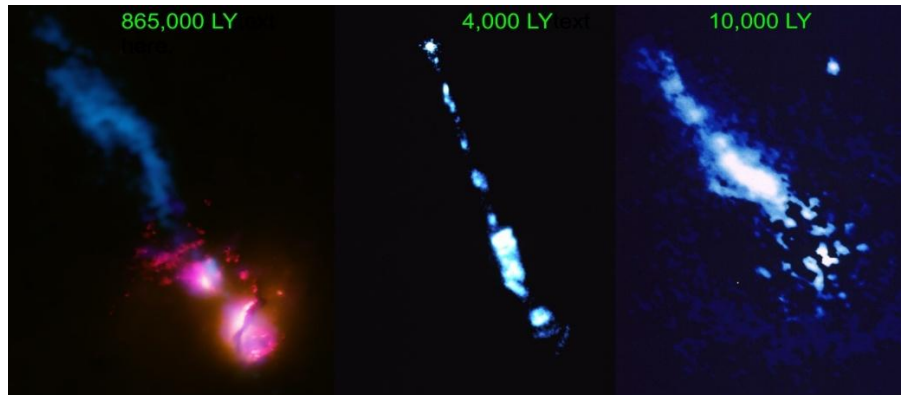


Figure 4: Hubble Space Telescope images of galactic jets with their lengths indicated in light years.

Although little is known of the physical processes occurring deep within the massive galactic center, some geophysical evidence suggests a possible means for galactic jets shooting from the galactic center and typically shooting out into the galactic rotation plane.

Earth's behavior is described by *Whole-Earth Decompression Dynamics* [40-45], which is the basis for virtually all surface geology and geodynamics.

Protoplanetary condensation at high pressures, high temperatures from within a giant gaseous protoplanet resulted in oxygen-starved elemental matter raining out to form Earth's interior, including uranium concentrating at Earth's center and functioning as a nuclear fission breeder reactor [13, 45-55].

Earth's complete primordial condensation and aggregation resulted in the formation of a gas giant planet whose rocky interior was surrounded by 300 Earth-masses of ices and gases, a planet similar in mass to Jupiter. At the center, the rocky planetary interior with its fluid core was compressed to about two-thirds Earth's present diameter by the weight of overlying ices and gases.

As pressures built within the Earth, occasionally there would be a "blow out". Pressure would force a column of matter from a depth of about 150 km to puncture a narrow hole a few meters in diameter through all of the overlying rock and explode at the surface in a funnel shape as wide as 200 meters (Figure 5) [56]. The eruptions of these diamond-bearing kimberlite pipes, however, were just sporadic events. Major catastrophic geological violence would occur again and again, as whole-Earth decompression split the continental crust, created new ocean basins,

produced mountain ranges characterized by folding, and caused widespread species extinctions [57].



Figure 5: Former diamond mine in the Far Eastern Federal District, Russia. Courtesy of Staselnik.

By analogy one might expect highly compressed nuclear matter to erupt from deep within the galactic core in a pipe-like manner producing the jets that seed the galaxy of dark stars with fissionable matter, turning dark stars it encounters into luminous stars. The centrifugal force due to galactic rotation biases and constrains the eruptions to the galactic plane.

THERMONUCLEAR IGNITION OF DARK GALAXIES

Consider a more-or-less spherical, gravitationally bound assemblage of dark (Population III) stars, a not-yet-ignited dark galaxy. Now, consider the galactic nucleus as it becomes massive and shoots its first jet of nuclear matter into the galaxy of dark stars, seeding and igniting those stars which it contacts. How might such a galaxy at that point appear? I suggest it would appear quite similar to NGC 4676 (Figure 6a), to NGC 10214 (Figure 6b), and to some of the group of galaxies known as Stephan's Quintet (Figure 7).

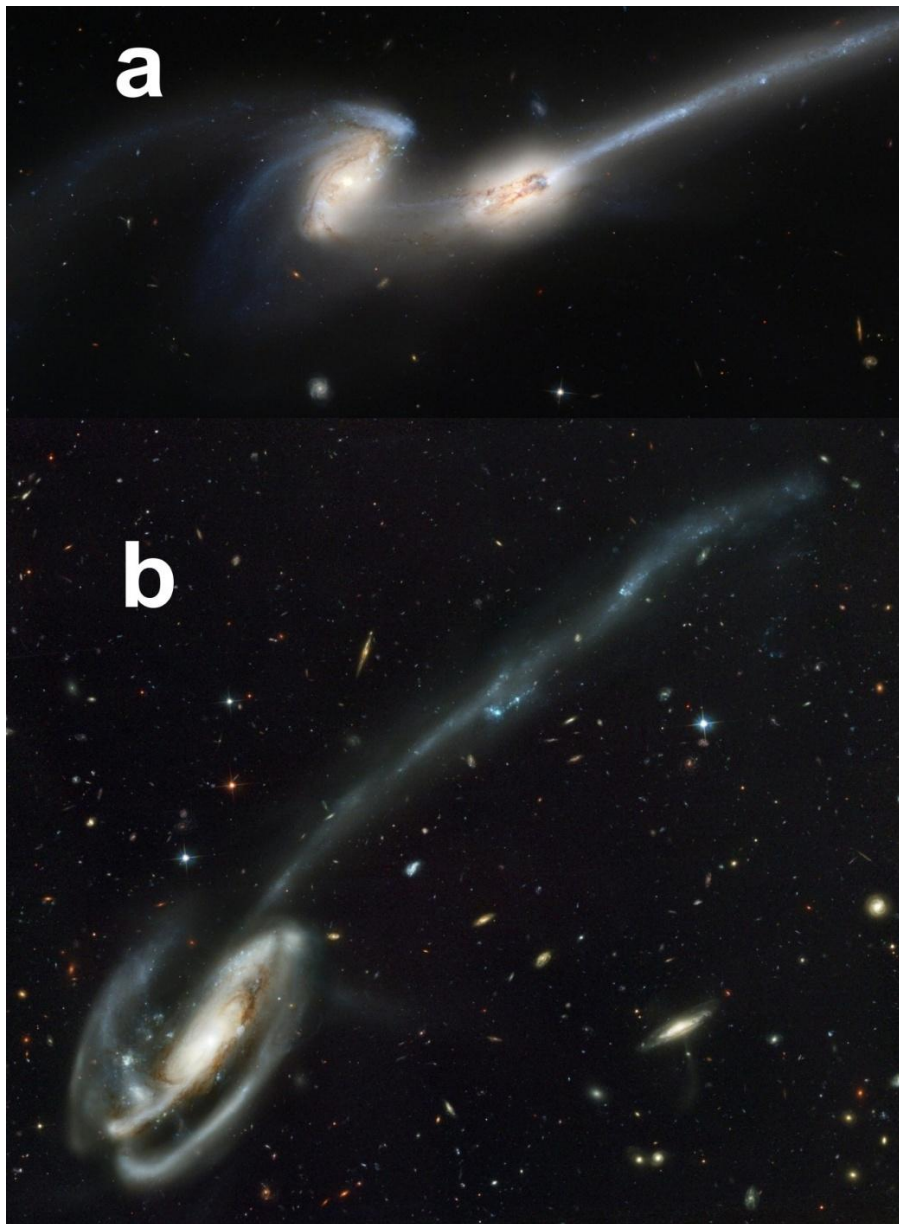


Figure 6: Caption in Table I



Figure 7: Group of galaxies known as Stephan's Quintet. Note the young galaxies just beginning to send out galactic jets of nuclear matter which ignite the thermonuclear reactions in the dark stars they encounter, turning dark stars into luminous stars.

The structures of just about all luminous galaxies, including the examples shown in Figures 6-12, appear to possess the jet-like luminous-star features, the imprints of the galactic jets which gave rise to their thermonuclear ignition, the imprints of the distribution of fissionable, heavy element seeds. The spherical assemblage of un-ignited dark stars comprises the “dark matter” that serves to maintain the dynamically stable configuration of the observed patterns of luminous stars. Therein is the commonality connecting the vast number of observed galactic structures with the logical and causal relationships I have described [12, 13, 16, 17, 58, 59].

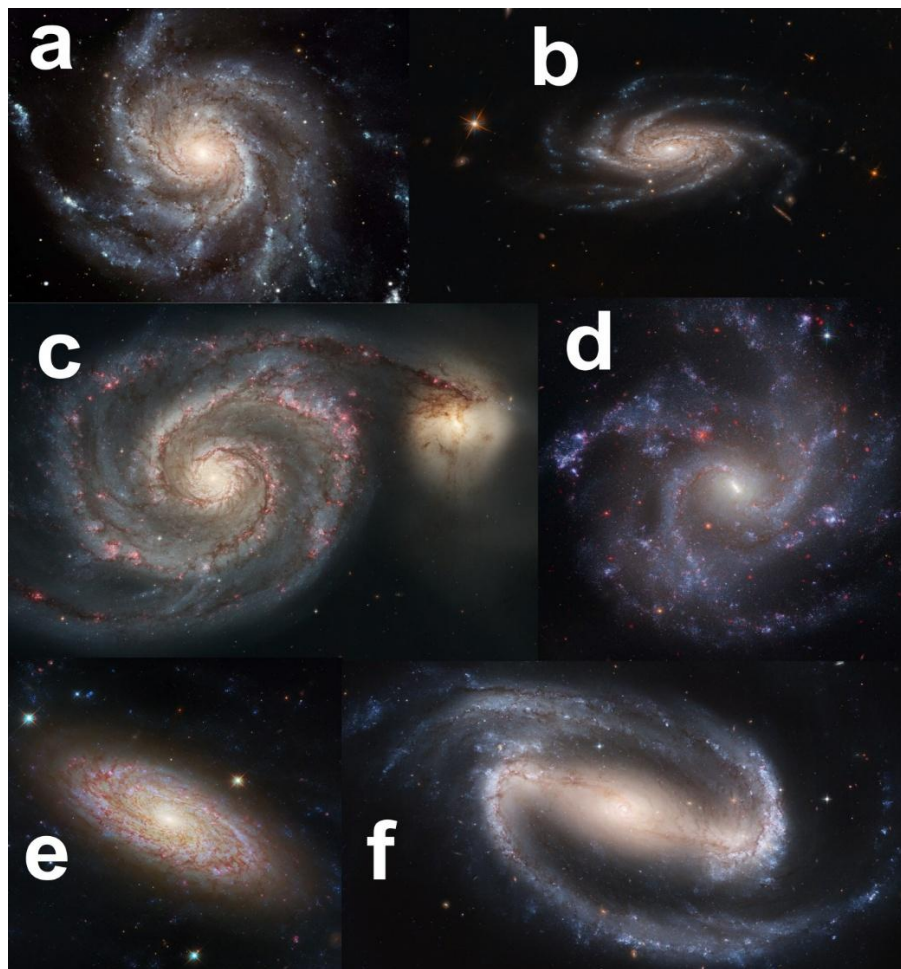


Figure 8: Captions in Table 1.

Table 1

Figure 6a. Hubble Space Telescope image of NGC 4676 showing the beginning formation of a spiral or barred spiral galaxy as the first jet is sent out from the galactic center and seeds the dark stars it encounters with fissionable matter, thus igniting the dark stars along its path.
Figure 6b. Hubble Space Telescope image of NGC 10214 showing the beginning formation of a luminous spiral or barred spiral galaxy as the initial jets sent out from the galactic center contact the dark stars along their paths, seeding the dark stars with fissionable matter, thus igniting those contacted dark stars. The luminous stars are records of the paths of previous galactic jets.
Figure 8a. Hubble Space Telescope image of M101 showing the paths where galactic jets have seeded dark stars in their paths, igniting thermonuclear fusion reactions in their dark stars by nuclear fission chain reactions, changing their dark stars to luminous stars, leading to the commonality of luminous features that give galaxies their customary appearances.
Figure 8b. Hubble Space Telescope image of NGC 2008 spiral galaxy in the constellation Pictor showing the paths where galactic jets have seeded dark stars in their paths, igniting thermonuclear fusion reactions in those dark stars by nuclear fission chain reactions, producing the luminous pattern common to the multitude of galaxies. The surrounding massive spherical assemblage of yet un-ignited dark stars maintains the dynamical stability of the pattern of luminous stars.
Figure 8c. Hubble Space Telescope image of M51 (NGC 5194) in the constellation Canes Venatici, showing paths of previous dark stars that became luminous stars when contacted by the nuclear matter jets from the galactic center. As in the case of virtually all galaxies, the pattern of luminous stars is maintained by the gravitational attraction of the massive spherical assemblage of yet un-ignited dark stars.

Figure 8d. Hubble and James Webb Space Telescopes combined image of NGC 5468 in the constellation Virgo. Note the galactic commonality of features attributed to thermonuclear ignition of dark stars by galactic jets of nuclear matter, and where dynamical structure stability is imparted by its massive spherical halo of un-ignited dark stars.

Figure 8e. James Webb Space Telescope image of NGC 2090. As with virtually all galaxies, note the configuration of luminous stars that bear witness to the galactic jets of nuclear matter that seeded the spherical assemblage of dark stars enabling those contacted stars to ignite their thermonuclear fusion reactions and become luminous.

Figure 8f. Hubble Space Telescope image of NGC 1300 barred spiral galaxy showing the paths where galactic jets seeded dark stars with fissionable matter that ignited their thermonuclear fusion reactions by nuclear fission chain reactions, changing dark stars into luminous stars.



Figure 9: Upper: James Webb and Hubble Space Telescopes image of colliding galaxies NGC 2207 and IC 2103, each showing paths of previous dark stars that became luminous stars when contacted by the nuclear matter jets from the galactic centers. Lower: Same photographed in mid ultraviolet light.

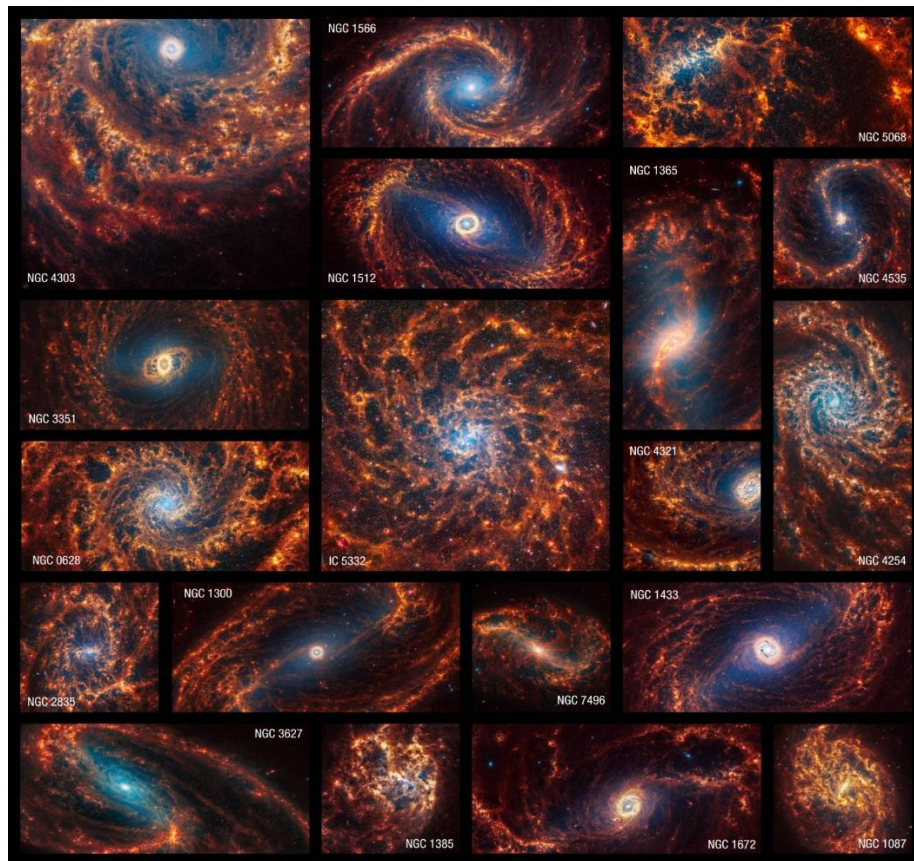


Figure 10: James Webb Space Telescope collection of 19 galaxies observed in near- and mid-infrared light. The luminous stars in each example bear witness to the galactic jets of nuclear matter that seeded each spherical assemblage of dark stars enabling those contacted stars to ignite their thermonuclear fusion reactions and become luminous.



Figure 11: Hubble Space Telescope image of galactic cluster in the constellation Cetus (the whale) showing that the multitude of galaxies have luminous features common to my suggestion [12, 13, 16, 58, 59] that galactic jets of nuclear matter seed dark stars they encounter in the spherical galactic assemblage of dark stars with fissionable elements, igniting their thermonuclear fusion reactions and producing the observed patterns of luminous stars.

And what of the dark matter necessary for dynamical stability of the structures of luminous galactic stars? The dark matter is the spherical halo of un-ignited dark stars, located just where it must be to impart rotational stability to the galactic luminous structure [32].

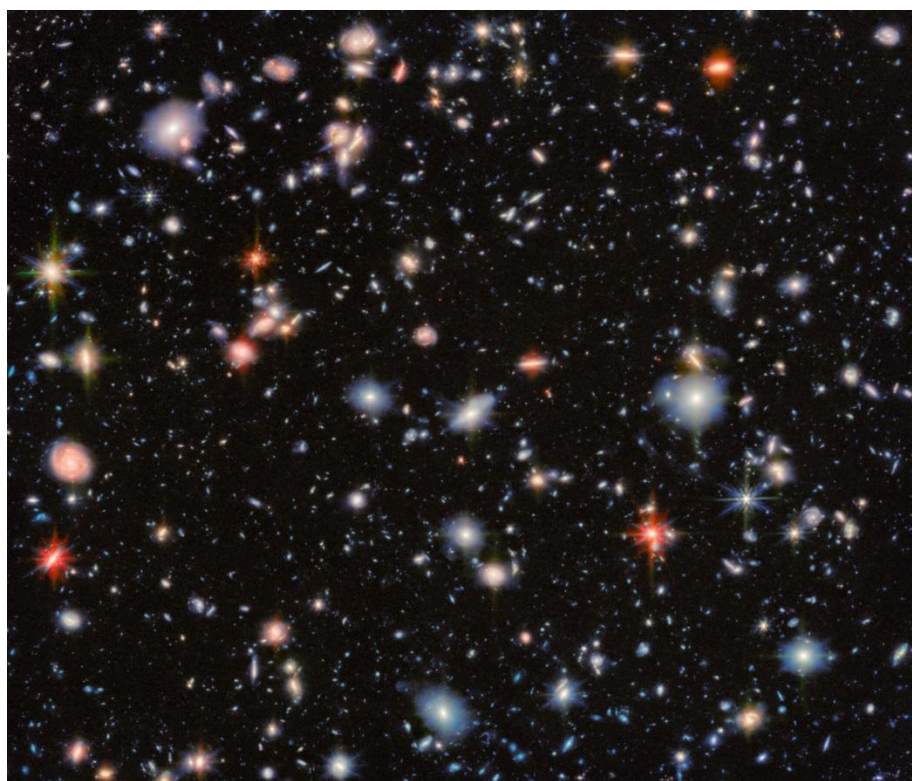


Figure 12: James Webb Space telescope ultra-deep field view showing a multitude of galaxies having the same jet-induced characteristic distributions of luminous stars.

ORIGIN OF ELEMENTS HEAVIER THAN HYDROGEN AND HELIUM

Since the 1930s, astrophysics has been built upon the concept that thermonuclear reactions in stars are ignited automatically by heat generated by the collapse of dust and gas during star formation. Not only are there severe problems associated with that concept, because of extreme heat loss at high temperatures during formation, but the observed jet-like distributions of luminous galactic stars are wholly inexplicable within that context. In stark contrast, the quite-limited variety of morphological galactic forms, especially the prevalence of jet-like arms can be understood in a logical and causally related way from my concept of heavy-elements being formed in galactic centers and jetted into the spherical galaxy of dark stars where they seed the dark stars they encounter with fissionable elements, which in turn ignite thermonuclear fusion reactions. From that perspective, the distribution of luminous stars in a galaxy, and consequently the type of galaxy, for example, barred or spiral, may simply be a reflection of the distribution of the fissionable elements jetted from the galactic center.

Astrophysicists group stars into two categories based upon their metal content. The association of low-metal stars in the region believed populated by zero-metal stars, *i.e.*, dark stars [13], suggests to me that there exist two *primary* sources of chemical elements. One of the two *primary* sources consists solely of a mixture of hydrogen and helium (the stuff of zero-

metallicity stars). The other *primary* source consists of the nuclear matter jetted out from the galactic center that yields not only the fissionable elements that ignite thermonuclear fusion reactions, but virtually all elements heavier than hydrogen and helium. *Secondarily*, over their lifetimes stars may synthesize some elements internally as well as possibly accumulating debris from previous astrophysical trauma-events.

As noted above, observational evidence, primarily based on velocity dispersions and rotation curves, indicates that spiral galaxies have associated with them massive, spheroidal, dark matter components, thought to reside in their galactic halos [32]. The disk stars of spiral galaxies, typically subjected to the most direct assault by galactic jets, consequently, belong to the heavy-element-rich Population I. The luminous spheroidal stars of spiral galaxies, typically subjected to only indirect assault by galactic jets, belong to the heavy-element-poor Population II [33, 34]. The association of dark matter with heavy-element-poor Population II stars is inferred to exist elsewhere, for example, surrounding elliptical galaxies [35, 36] and is indicative of only indirect assault by galactic jets. The apparent association of the relative degree of metallicity with the proximity to galactic jets is compelling evidence of my fundamental statement that the “other *primary* source” of elements consists of the nuclear matter jetted out from the galactic center that yields not only the fissionable elements that ignite thermonuclear fusion reactions, but virtually all elements heavier than hydrogen and helium.

ORIGIN OF GALACTIC COSMIC RAYS

Observation of actinide elements in galactic cosmic rays is one feature that connects their origin to galactic jets, whose nuclear matter forms actinide elements that sustain nuclear fission chain reactions which ignite thermonuclear fusion reactions thereby making galactic dark stars luminous. Presumably, the nuclear matter jetted from galactic centers is sufficiently energetic to account for the energy distributions observed in galactic cosmic rays.

Metallicity values vary significantly within Population I stars, typically ranging from 0.1 to 3 times the solar value. They also vary significantly within Population II stars, typically ranging from 0.001 to 0.1 of the sun’s metallicity, presumably reflecting indirect assault by galactic jets. Much of current research has focused on trying to understand the nature of galactic cosmic rays. In light of the results and discussion presented here, new research might focus on better understanding the nature of galactic jets. It would be highly desirable to investigate the condensation of elements from the jetted galactic nuclear matter. Theoretical results can be compared to the solar/meteoritic abundances of the elements, especially the odd atomic mass nuclides.

CONCLUSIONS

Galaxies are prominent features as deep into the universe as astronomers can observe. Among the vast number of galaxies, there are only a few prominent morphologies, suggesting a commonality of formative conditions. Galaxies and the origin of elements heavier than hydrogen and helium are inexplicable within the current foundations of astrophysics which are based upon stellar ignition by gravitational collapse, galaxy formation from luminous stars, and abrogation of scientific standards. I have presented evidence for a fundamentally different understanding that began with the realization that thermonuclear reactions in stars, as in hydrogen bombs/devices, are ignited by nuclear fission chain reactions, and ultimately that

dark stars in dark galaxies are ignited by nuclear matter jetted out from the galactic center. The luminous stars of galaxies are evidence of the paths of galactic jets that contacted and seeded dark stars with fissionable elements that ignited their thermonuclear fusion reactions.

The nuclear matter of the galactic jets, I posited, is the principal origin and source of elements heavier than hydrogen and helium. The spherical assemblage of un-ignited dark stars maintains the dynamical stability of the pattern of luminous stars as required by the velocity dispersions and rotation curves evidenced by Vera C. Rubin [32].

Observation of actinide elements in galactic cosmic rays is one feature that connects their origin to galactic jets, whose nuclear matter forms actinide elements that sustain nuclear fission chain reactions which ignite thermonuclear fusion reactions thereby making galactic dark stars luminous. Presumably, the nuclear matter jetted from galactic centers is sufficiently energetic to account for the energy distributions observed in galactic cosmic rays [11].

Cosmic rays can now be considered in some manner as samples of galactic jets. Jets from galaxies with different central masses may or may not be identical, but the commonality is that all yield actinide elements capable of nuclear fission chain reactions. Theoretical Investigations (not models) of nuclear matter condensation of elements from the jetted galactic nuclear matter can be validated by comparison with solar/meteoritic abundances of the elements, especially the odd atomic mass nuclides. Much of astrophysics is simply wrong, having been based upon false fundamental assumptions, for example, related to stellar ignition by gravitational collapse. Consequently, for example, there is no reason to consider Population II stars in a given galaxy as being older than the Population I stars.

References

1. Hess, V.F., *Über Beobachtungen der durchdringenden Strahlung bei sieben Freiballonfahrten*. Z. Phys., 1912. 13: p. 1084.
2. Freier, P., et al., *Evidence for heavy nuclei in the primary cosmic radiation*. Physical Review, 1948. 74(2): p. 213.
3. Freier, P., et al., *The heavy component of primary cosmic rays*. Physical Review, 1948. 74(12): p. 1818.
4. Fowler, P.H., et al., *The charge spectrum of very heavy cosmic ray nuclei*. Proceedings of the Royal Society of London. Series A. Mathematical and Physical Sciences, 1967. 301(1464): p. 39-45.
5. Westphal, A.J., et al., *Evidence against stellar chromospheric origin of galactic cosmic rays*. Nature, 1998. 396(6706): p. 50-52.
6. Donnelly, J., et al., *Actinide and ultra-heavy abundances in the local galactic cosmic rays: an analysis of the results from the LDEF ultra-heavy cosmic-ray experiment*. The Astrophysical Journal, 2012. 747(1): p. 40.
7. Cassé, M. and P. Goret, *Ionization models of cosmic ray sources*. Astrophysical Journal, Part 1, vol. 221, Apr. 15, 1978, p. 703-712., 1978. 221: p. 703-712.
8. Meyer, J.-P., *Solar-stellar outer atmospheres and energetic particles, and galactic cosmic rays*. Astrophysical Journal Supplement Series (ISSN 0067-0049), vol. 57, Jan. 1985, p. 173-204., 1985. 57: p. 173-204.
9. Meyer, J.-P., L.O.C. Drury, and D.C. Ellison, *Galactic cosmic rays from supernova remnants. I. A cosmic-ray composition controlled by volatility and mass-to-charge ratio*. The Astrophysical Journal, 1997. 487(1): p. 182.

10. Binns, W., et al. *The abundances of the heavier elements in the cosmic radiation*. in *AIP Conference Proceedings*. 1989. American Institute of Physics.
11. Alves Batista, R., et al., *Open questions in cosmic-ray research at ultrahigh energies*. *Frontiers in Astronomy and Space Sciences*, 2019. 6: p. 23.
12. Herndon, J.M., *Celestial Science: Highest Tier of Knowledge Related to Planets, Stars, Galaxies, Dark Matter and More*. 2025: Amacon.com <https://www.amazon.com/dp/B0G4M8CT8W/>
13. Herndon, J.M., *Planetary and protostellar nuclear fission: Implications for planetary change, stellar ignition and dark matter*. *Proc. R. Soc. Lond*, 1994. A455: p. 453-461.
14. Burbidge, E.M., et al., *Synthesis of the elements in stars*. *Rev. Mod. Phys.*, 1957. 29(4): p. 547-650.
15. Anders, E. and N. Grevesse, *Abundances of the elements: Meteoritic and solar*. *Geochimica et Cosmochimica acta*, 1989. 53(1): p. 197-214.
16. Herndon, J.M., *New concept for internal heat production in hot Jupiter exo-planets, thermonuclear ignition of dark galaxies, and the basis for galactic luminous star distributions*. *Curr. Sci.*, 2009. 96: p. 1453-1456.
17. Herndon, J.M., *Origin of the elements constituting the universe and thermonuclear ignition of dark galaxies*. *European Journal of Applied Sciences*, 2025. 13(3): p. 218-235.
18. Bacquerel, H., *Sur les radiations emises par phosphorescence*. *Comptes Rendus*, 1896. 122: p. 501-503.
19. Malley, M.C., *Radioactivity: a history of a mysterious science*. 2011: Oxford University Press.
20. Oliphant, M.L., P. Harteck, and E. Rutherford, *Transmutation effects observed with heavy hydrogen*. *Nature*, 1934. 133: p. 413.
21. Gamow, G. and E. Teller, *The rate of selective thermonuclear reactions*. *Phys. Rev.*, 1938. 53: p. 608-609.
22. Bethe, H.A., *Energy production in stars*. *Phys. Rev.*, 1939. 55(5): p. 434-456.
23. Hayashi, C. and T. Nakano, *Thermal and dynamic properties of a protostar and its contraction to the stage of quasi-static equilibrium*. *Prog. theor. Physics*, 1965. 35: p. 754-775.
24. Larson, R.B., *Gravitational torques and star formation*. *Mon. Not. R. astr. Soc.*, 1984. 206: p. 197-207.
25. Stahler, S.W., et al., *The early evolution of protostellar disks*. *Astrophys. J.*, 1994. 431: p. 341-358.
26. Gamow, G., *Nuclear energy sources and stellar evolution*. *Physical Review*, 1938. 53(7): p. 595.
27. Levée, R.D., *A gravitational contracting model*. *Astrophys. J.*, 1953. 117: p. 200-210.
28. Schwartzchild, M., *Structure and evolution of the stars*. 1958, Princeton: Princeton University Press.
29. Serber, R., *The Los Alamos primer: The first lectures on how to build an atomic bomb*. 1992: Univ of California Press.
30. Rhodes, R., *The Making of the Atomic Bomb*. 1986, New York: Simon & Schuster.
31. Lynden-Bell, D. and J.P. O'Dwyer, *One mass-relation for planets, white dwarfs, and neutron stars*. [arXiv.org/abs/astro-ph/0104450](https://arxiv.org/abs/astro-ph/0104450), 2008.
32. Rubin, V.C., *The rotation of spiral galaxies*. *Science*, 1983. 220: p. 1339-1344.
33. Bacall, J.N., *Star counts and galactic structure*. *A. Rev. Astron. Astrophys.*, 1986. 24: p. 577-611.
34. van der Kruit, P.C., *Surface photometry of edge-on spiral galaxies*. *Astron. Astrophys.*, 1986. 157: p. 230-244.
35. Jarvis, B.J. and K.C. Freeman, *A dynamical model for galactic bulges*. *Astrophys. J.*, 1985. 295: p. 314-323.
36. Levison, H.F. and D.O. Richstone, *Scale-free models of highly flattened elliptical galaxies with massive halos*. *Astrophys. J.*, 1985. 295: p. 340-348.
37. Davies, J., et al., *A multibeam HI survey of the Virgo Cluster - two isolated HI clouds?* *Mon. Not. R. astr. Soc.*,

2004. 349(3): p. 922.
38. Minchin, R., et al., *A dark hydrogen cloud in the Virgo structure*. *Astrophys. J.*, 2005. 622: p. L21-L24.
39. Minchin, R., et al., *High resolution H I imaging of VIRGOHI 21 - a dark galaxy in the Virgo Cluster*. *American Astronomical Society Meeting 207 #188.13*, 2005.
40. Herndon, J.M., *Whole-Earth decompression dynamics*. *Curr. Sci.*, 2005. 89(10): p. 1937-1941.
41. Herndon, J.M., *Solar System processes underlying planetary formation, geodynamics, and the georeactor*. *Earth, Moon, and Planets*, 2006. 99(1): p. 53-99.
42. Herndon, J.M., *Energy for geodynamics: Mantle decompression thermal tsunamis*. *Curr. Sci.*, 2006. 90(12): p. 1605-1606.
43. Herndon, J.M., *Geodynamic Basis of Heat Transport in the Earth*. *Curr. Sci.*, 2011. 101(11): p. 1440-1450.
44. Herndon, J.M., *Origin of mountains and primary initiation of submarine canyons: the consequences of Earth's early formation as a Jupiter-like gas giant*. *Curr. Sci.*, 2012. 102(10): p. 1370-1372.
45. Herndon, J.M., *Why Plate Tectonic Theory is Wrong: Introduction to Modern Geoscience*. 2025: Amazon. com <https://www.amazon.com/Why-Plate-Tectonic-Theory-Wrong/dp/B0G1B6BWJ5/>.
46. Herndon, J.M., *Feasibility of a nuclear fission reactor at the center of the Earth as the energy source for the geomagnetic field*. *J. Geomag. Geoelectr.*, 1993. 45: p. 423-437.
47. Herndon, J.M., *Sub-structure of the inner core of the earth*. *Proc. Nat. Acad. Sci. USA*, 1996. 93: p. 646-648.
48. Herndon, J.M., *Examining the overlooked implications of natural nuclear reactors*. *Eos, Trans. Am. Geophys. U.*, 1998. 79(38): p. 451,456.
49. Herndon, J.M., *Nuclear georeactor origin of oceanic basalt $^3\text{He}/^4\text{He}$, evidence, and implications*. *Proc. Nat. Acad. Sci. USA*, 2003. 100(6): p. 3047-3050.
50. Herndon, J.M., *Nuclear georeactor generation of the earth's geomagnetic field*. *Curr. Sci.*, 2007. 93(11): p. 1485-1487.
51. Herndon, J.M., *Terracentric nuclear fission georeactor: background, basis, feasibility, structure, evidence and geophysical implications*. *Curr. Sci.*, 2014. 106(4): p. 528-541.
52. Hollenbach, D.F. and J.M. Herndon, *Deep-earth reactor: nuclear fission, helium, and the geomagnetic field*. *Proc. Nat. Acad. Sci. USA*, 2001. 98(20): p. 11085-11090.
53. Herndon, J.M., *Cataclysmic geomagnetic field collapse: Global security concerns*. *Journal of Geography, Environment and Earth Science International*, 2020. 24(4): p. 61-79.
54. Herndon, J.M., *Causes and consequences of geomagnetic field collapse*. *J. Geog. Environ. Earth Sci. Intn.*, 2020. 24(9): p. 60-76.
55. Herndon, J.M., *Humanity imperiled by the geomagnetic field and human corruption*. *Advances in Social Sciences Research Journal*, 2021. 8(1): p. 456-478.
56. Sparks, R., et al., *Dynamical constraints on kimberlite volcanism*. *Journal of Volcanology and Geothermal Research*, 2006. 155(1-2): p. 18-48.
57. Herndon, J.M., *New mechanism driving major species extinction events*. *European Journal of Applied Sciences*, 2024. 12(1): p. 517-530.
58. Herndon, J.M., *Nature of the Universe: astrophysical paradigm shifts*. *Advances in Social Sciences Research Journal*, 2021. 8(1): p. 631-645.
59. Herndon, J.M., *Open letter to the Pontiff and Vatican Cardinals on pervasively corrupt Earth, planetary, and astrophysical science*. *Advances in Social Sciences Research Journal*, 2023. 10(1): p. 440-479.